

METAL SOLUTIONS

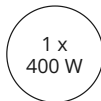
# EOS M 290

- **Repeatable Excellence:** Exceptional laser quality and detail resolution ensure repeatable results – even for highly complex parts -- every single time.
- **Material Versatility:** With the widest range of validated materials and processes available on the market, all your needs are covered.
- **From Start to Part Fast:** The EOS M 290 allows fast, flexible, dependable, and cost-effective production of metal parts directly from CAD data.



## EXPOSURE MODULE

LASERS



Up to two precise lasers expose in a 250 x 250mm square with different optics to choose from and Pulse Modulation enabled.

## SOFTWARE



EOS BUILD

EOS Build subscriptions offer enhanced EOSPRINT features for multiple users with flexible material management; Build+ adds more licenses, advanced materials, and training for up to 5 users.



EOS SMART MONITORING

EOS Smart Monitoring utilizes Exposure OT for comprehensive build monitoring and pairs it with Smart Fusion to regulate heat within set parameters in collaboration with EOS Build/Build+.



EOS SYSTEM SUITE

EOS System Suite optimizes production by streamlining processes, integrating with MES and shop-floor IT systems, and generating detailed quality reports.



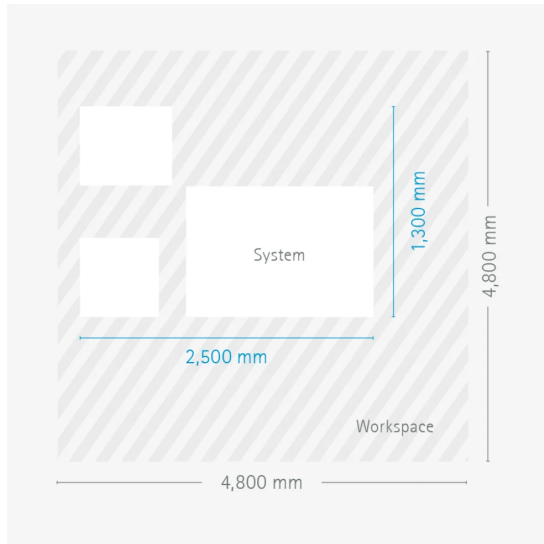
EOS M 290

## TECHNICAL DATA

<b>BUILD VOLUME</b>	250 x 250 x 325* mm (9.8 x 9.8 x 12.8 in)
<b>LASER TYPE</b>	Yb-fiber laser; 1 x 400 W
<b>PRECISION OPTICS</b>	1 F-theta-lens(es); 1 High-speed scanner(s)
<b>SCAN SPEED</b>	up to 7.0 m/s (23.0 ft/s)
<b>FOCUS DIAMETER</b>	approx. 100 µm (0.00394 in)
<b>POWER SUPPLY</b>	1 x 32 A
<b>POWER CONSUMPTION</b>	max. 8.5 kW / typical 2.4 kW
<b>COMPRESSED AIR SUPPLY</b>	7 Bar; 20 m <sup>3</sup> /h (102 psi; 706 ft <sup>3</sup> /h)

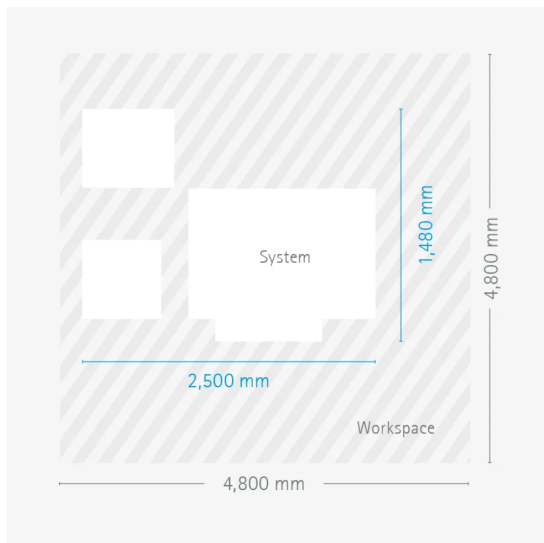
\* Height includes build plate

# DIMENSIONS & WEIGHT



## EOS M 290

Height: 2,190 mm / Weight approx. 1,250 kg



## EOS M 290 with Comfort Powder Module

Height: 2,190 mm / Weight approx. 1,250 kg



## EOS M 290

EOS Aluminium Al5X1



EOS Aluminium AlF357



EOS Aluminium AlSi10Mg



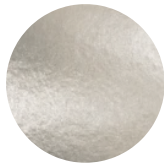
EOS Aluminium Al2139 AM



EOS CaseHardeningSteel  
20MnCr5



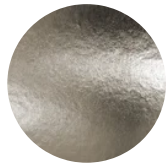
EOS CobaltChrome MP1



EOS Copper Cu



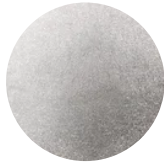
EOS CopperAlloy CuNi30



EOS MaragingSteel MS1



EOS NickelAlloy HAYNES® 282®



EOS NickelAlloy HX



EOS NickelAlloy IN625



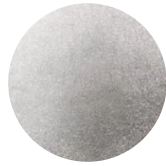
EOS NickelAlloy IN718



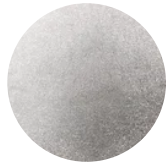
EOS NickelAlloy IN738



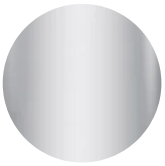
EOS NickelAlloy IN939



EOS NickelAlloy K500



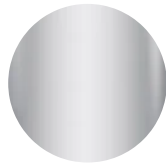
EOS StainlessSteel 17-4PH



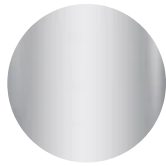
EOS StainlessSteel 254



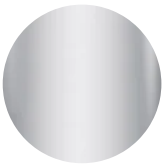
EOS StainlessSteel 316L



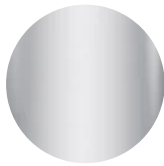
EOS StainlessSteel CX



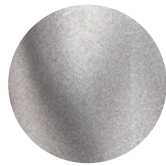
EOS StainlessSteel PH1



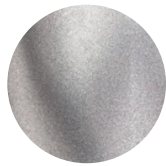
EOS StainlessSteel SuperDuplex



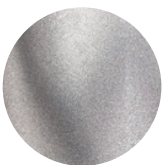
EOS Titanium Ti64



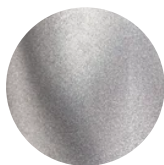
EOS Titanium Ti64 Grade 23



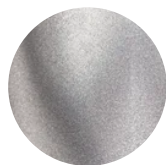
EOS Titanium Ti64 Grade 5



EOS Titanium Ti64ELI



EOS Titanium TiCP Grade 2



EOS ToolSteel 1.2709



EOS ToolSteel CM55



# OPTIONAL ACCESSORIES



## IPCM M Extra

Manual and flexible powder handling



## Comfort Powder Module

Safe handling of powder inside the process chamber

## HEADQUARTERS

**EOS GmbH**  
**Electro Optical Systems**

Robert-Stirling-Ring 1  
82152 Krailling / Munich  
Germany

Tel.: +49 89 893 36-0  
Email: [info@eos.info](mailto:info@eos.info)  
URL: [www.eos.info](http://www.eos.info)

Status as of 12.12.2024. Subject to technical modifications. EOS is certified according to ISO 9001.

EOS®, Additive Minds® Alumide®, AMQ®, CarbonMide®, DirectMetal®, DMLS®, EOSAME®, EOSINT®, EOSIZE®, EOSPACE®, EOSPRINT®, EOSTATE®, EOSTYLE®, FORMIGA®, LaserProFusion®, PA 2200®, PrimeCast® and PrimePart® are registered trademarks of EOS GmbH Electro Optical Systems in some countries. For more information visit [www.eos.info/trademarks](http://www.eos.info/trademarks).